



THE SCHOOL BOARD OF BROWARD COUNTY, FLORIDA
2020-2021 ORGANIZATIONAL CHART

Board Approved: 06/09/20
Revised: 02/09/21



**THE SCHOOL BOARD OF BROWARD COUNTY, FLORIDA
2020-2021 ORGANIZATIONAL CHART**

School Board Appointed Committees & Public Stakeholders	1
Superintendent of Schools	2
General Counsel	3
School Performance & Accountability	4
Academics	5-7
Learning & Development Support	5
Exceptional Student Learning Support	6
Student Learning	7
Student Support Initiatives & Recovery	8
Auditor	9
Facilities	10
Financial Management	11
Human Resources & Equity	12
Information & Technology	13
Portfolio Services	14
Communications	15
Chief of Staff	16
Safety, Security & Emergency Preparedness	17
Strategy & Operations	18-20
Business Support Center, Grants Administration, Strategic Implementation & Accountability	18
Food & Nutrition Services, Procurement & Warehousing Services, Supplier Diversity & Outreach, Student Transportation & Fleet Services	19
Physical Plant Operations	20



**THE SCHOOL BOARD OF BROWARD COUNTY, FL
2020-2021 ORGANIZATIONAL CHART**

**SCHOOL BOARD APPOINTED COMMITTEES &
PUBLIC STAKEHOLDERS**

Funding:
Funding from sources other than General Funds
C Capital **FS** Food Service **Gr** Grant
G General **R** Referendum

**BROWARD COUNTY
COMMUNITY**

**THE SCHOOL BOARD OF
BROWARD COUNTY, FLORIDA**

School Board Appointed Committees

School Board Appointed Committees

- Audit Committee
- District Advisory Council
- Diversity Committee
- ESE Advisory Council
- Facilities Task Force

- Gifted Advisory Council
- Human Relations Committee
- Student Advisor
- Supplier Diversity & Outreach Advisory
- Technology Advisory Committee

**SUPERINTENDENT
OF SCHOOLS**

PUBLIC STAKEHOLDERS

- Bond Oversight Committee
- ESOL Leadership Council
- Parent/Community Involvement Task Force
- Parent Teacher Association (PTA)
- Qual. Selection & Eval. Comm. (QSEC)
- Superintendent's Insurance Advisory Committee
- Teacher Advisory Council
- Wellness & Learning Support Committee

Funding from sources other than General Funds

Funding:
C Capital **FS** Food Service **Gr** Grant
G General **R** Referendum



**THE SCHOOL BOARD OF BROWARD COUNTY, FL
 2020-2021 ORGANIZATIONAL CHART**

SUPERINTENDENT

**BROWARD COUNTY
 COMMUNITY**

**THE SCHOOL BOARD OF
 BROWARD COUNTY, FLORIDA**

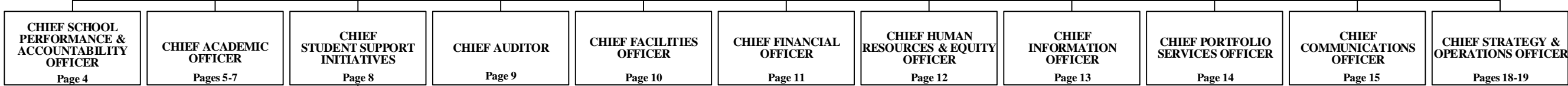


CHIEF OF STAFF ^(S)
 Page 16

DIRECTOR ^(D)
Legislative Affairs

COORDINATOR ⁽²⁷⁾
Governmental Affairs

CHIEF ^(S)
SAFETY & SECURITY OFFICER
 Page 17



Recovery Team

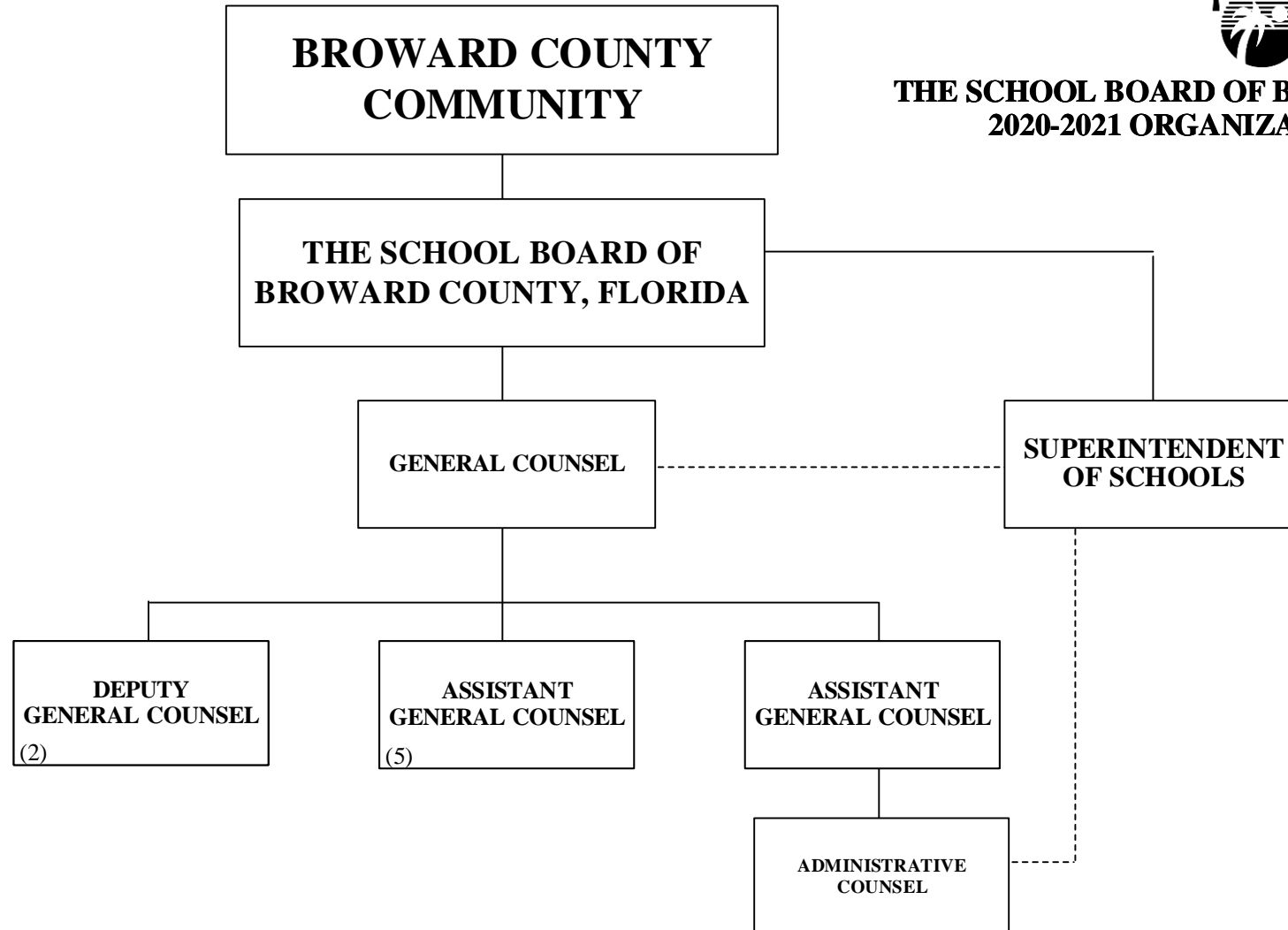
GENERAL COUNSEL



**THE SCHOOL BOARD OF BROWARD COUNTY, FL
2020-2021 ORGANIZATIONAL CHART**

Funding from sources other than General Funds

Funding:
C Capital **FS** Food Service **Gr** Grant
G General **R** Referendum



Funding from sources other than General Funds

Funding:

- C** Capital **FS** Food Service **Gr** Grant
- G** General **R** Referendum

SCHOOL PERFORMANCE & ACCOUNTABILITY OSPA



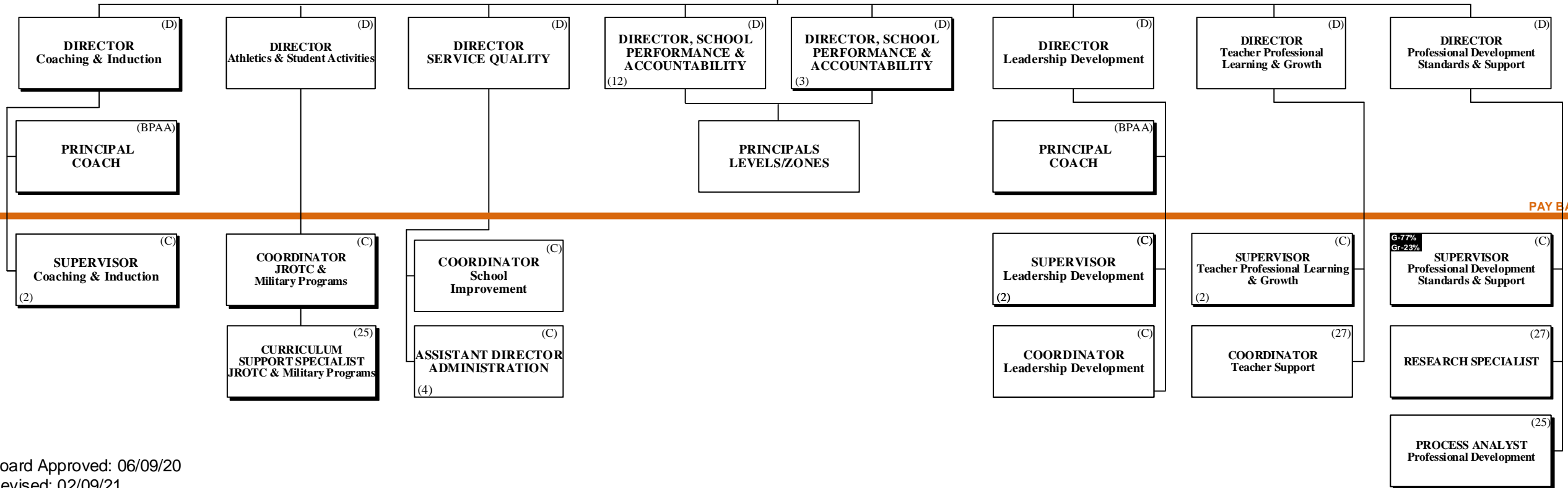
THE SCHOOL BOARD OF BROWARD COUNTY, FLORIDA

**THE SCHOOL BOARD OF BROWARD COUNTY, FL
2020-2021 ORGANIZATIONAL CHART**

SUPERINTENDENT OF SCHOOLS

CHIEF SCHOOL PERFORMANCE & ACCOUNTABILITY OFFICER (S)

PAY BANDS 'S' & 'E'



PAY BAND 'D'

PAY BANDS 'C' & 'B'

Board Approved: 06/09/20
Revised: 02/09/21

ACADEMICS LEARNING & DEVELOPMENT SUPPORT



THE SCHOOL BOARD OF BROWARD COUNTY, FL 2020-2021 ORGANIZATIONAL CHART

Funding:
 Funding from sources other than General Funds: **C** Capital **FS** Food Service **Gr** Grant
G General **R** Referendum

THE SCHOOL BOARD OF BROWARD COUNTY, FLORIDA

SUPERINTENDENT OF SCHOOLS

CHIEF ACADEMIC OFFICER (S)

EXECUTIVE DIRECTOR (E)
Early Learning & Language Acquisition

PAY BANDS 'S' & 'E'

G-10%
Gr-90%
DIRECTOR (D)
Head Start/Early Intervention

DIRECTOR (D)
Literacy

DIRECTOR (D)
Student Assessment & Research

G-10%
Gr-90%
DIRECTOR (D)
Title I, Migrant & Special Programs

DIRECTOR (D)
Innovative Programs Design/Support

PAY BAND 'D'

CURRICULUM SUPERVISOR (C)
Head Start/Early Head Start

CURRICULUM SUPERVISOR (C)
VPK Programs

CURRICULUM SUPERVISOR (C)
School Readiness

CURRICULUM SUPERVISOR (C)
School Readiness

RESEARCH SPECIALIST (27)

RESEARCH SPECIALIST (27)
(2)

SPECIALIST (25)
Testing
(2)

SPECIALIST (25)
Title I
(5)

SPECIALIST (25)
(ESEA Title I)
Basic Schoolwide Project & Program Improvement

GRANT ADMINISTRATOR SPECIALIST (25)

ASSISTANT DIRECTOR (D)
School/Venture Design Support

SPECIALIST (C)
Account Client Support

SPECIALIST (25)
Innovative Programs

SPECIALIST (B)
Head Start Family Services

SPECIALIST (B)
Head Start/Early Head Start

PAY BANDS 'C' & 'B'

ACADEMICS EXCEPTIONAL STUDENT LEARNING SUPPORT



**THE SCHOOL BOARD OF BROWARD COUNTY, FL
2020-2021 ORGANIZATIONAL CHART**

Funding from sources other than General Funds

Funding:
C Capital **FS** Food Service **Gr** Grant
G General **R** Referendum

THE SCHOOL BOARD OF BROWARD COUNTY, FLORIDA

SUPERINTENDENT OF SCHOOLS

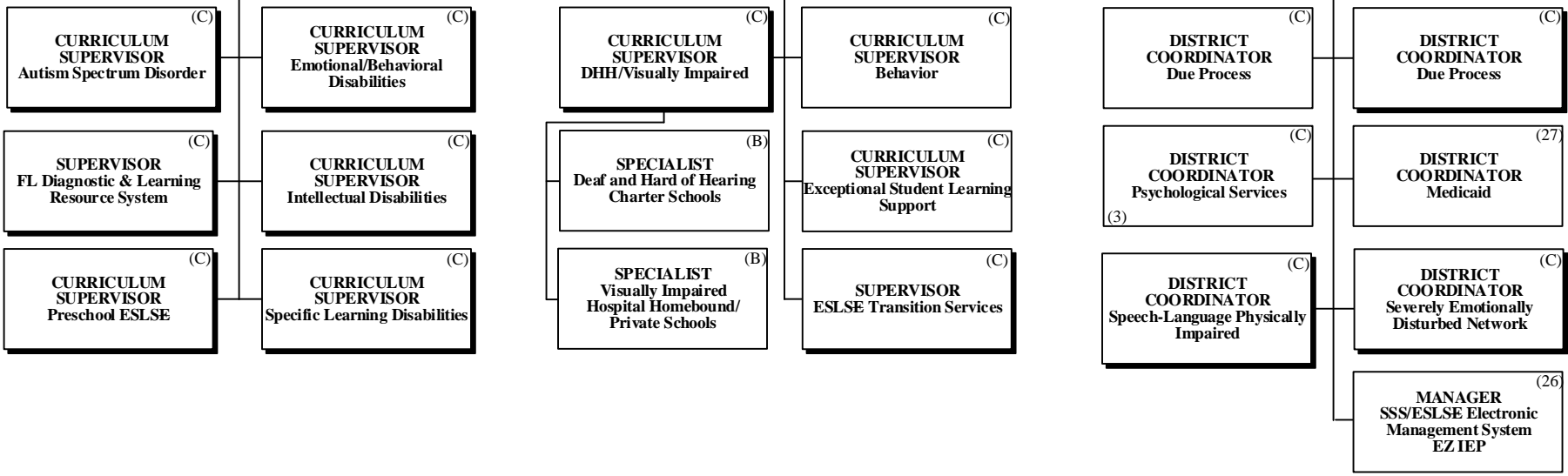
CHIEF ACADEMIC OFFICER ^(S)

EXECUTIVE DIRECTOR
Exceptional Student Learning Support ^(E)

PAY BANDS 'S' & 'E'

DIRECTOR ^(D) Exceptional Student Learning Support (Pre-K/Elementary)
 DIRECTOR ^(D) Exceptional Student Learning Support (Secondary)
 DIRECTOR ^(D) Exceptional Student Learning Support Services

PAY BAND 'D'



PAY BANDS 'C' & 'B'

ACADEMICS STUDENT LEARNING



**THE SCHOOL BOARD OF BROWARD
COUNTY, FLORIDA**

**THE SCHOOL BOARD OF BROWARD COUNTY, FL
2020-2021 ORGANIZATIONAL CHART**

Funding:
Funding from sources other than General Funds
C Capital **FS** Food Service **Gr** Grant
G General **R** Referendum

SUPERINTENDENT OF SCHOOLS

CHIEF
ACADEMIC
OFFICER (S)

PAY BANDS 'S' & 'E'

(D)
DIRECTOR
Elementary Learning

(D)
DIRECTOR
Secondary Learning

(D)
DIRECTOR
Innovative Learning

(D)
DIRECTOR
Applied Learning

(D)
DIRECTOR
Career, Technical, Adult,
Community Education

(D)
DIRECTOR
Bilingual/ESOL

PAY BAND 'D'

(C)
**CURRICULUM
SUPERVISOR**
Language Arts
(2)

(C)
**CURRICULUM
SUPERVISOR**
Language Arts
(2)

(C)
**CURRICULUM
SUPERVISOR**
Library Media

(C)
**CURRICULUM
SUPERVISOR**
Physical Education &
Educational Programs

(C)
**CURRICULUM
SUPERVISOR**
Music & Performing Arts

(C)
**CURRICULUM
SUPERVISOR**
Business Technology

(C)
**CURRICULUM
SUPERVISOR**
Educational Leadership

(25)
**EDUCATION
SPECIALIST I**
ESOL
(2)

(C)
**CURRICULUM
SUPERVISOR**
Bilingual/ESOL
G-27%
Gr-76%

(C)
**CURRICULUM
SUPERVISOR**
Math
(2)

(C)
**CURRICULUM
SUPERVISOR**
Math
(2)

(C)
**CURRICULUM
SUPERVISOR**
Gifted & Talented

(C)
**CURRICULUM
SUPERVISOR**
STEM+C

(C)
**CURRICULUM
SUPERVISOR**
Art

(C)
**CURRICULUM
SUPERVISOR**
Health Science

(C)
**CURRICULUM
SUPERVISOR**
Family & Consumer Science

(25)
**EDUCATION
SPECIALIST I**
Dual Language/World
Language

(C)
**CURRICULUM
SUPERVISOR**
World Languages

(C)
**CURRICULUM
SUPERVISOR**
Science

(C)
**CURRICULUM
SUPERVISOR**
Science

(27)
**PROJECT
MANAGER**
Technology & Instruction

(C)
**CURRICULUM
SUPERVISOR**
Humanities

(C)
**CURRICULUM
SUPERVISOR**
Technical Education/
Agriculture

(C)
**CURRICULUM
SUPERVISOR**
Vocational Education
Industrial

(25)
SPECIALIST
Bilingual Outreach Program

(27)
RESEARCH SPECIALIST
G-50%
Gr-50%

(C)
**CURRICULUM
SUPERVISOR**
Social Studies

(C)
**CURRICULUM
SUPERVISOR**
Social Studies

(25)
ANALYST
Training

(25)
ANALYST
Instructional & Digital
Material

PAY BANDS 'C' & 'B'

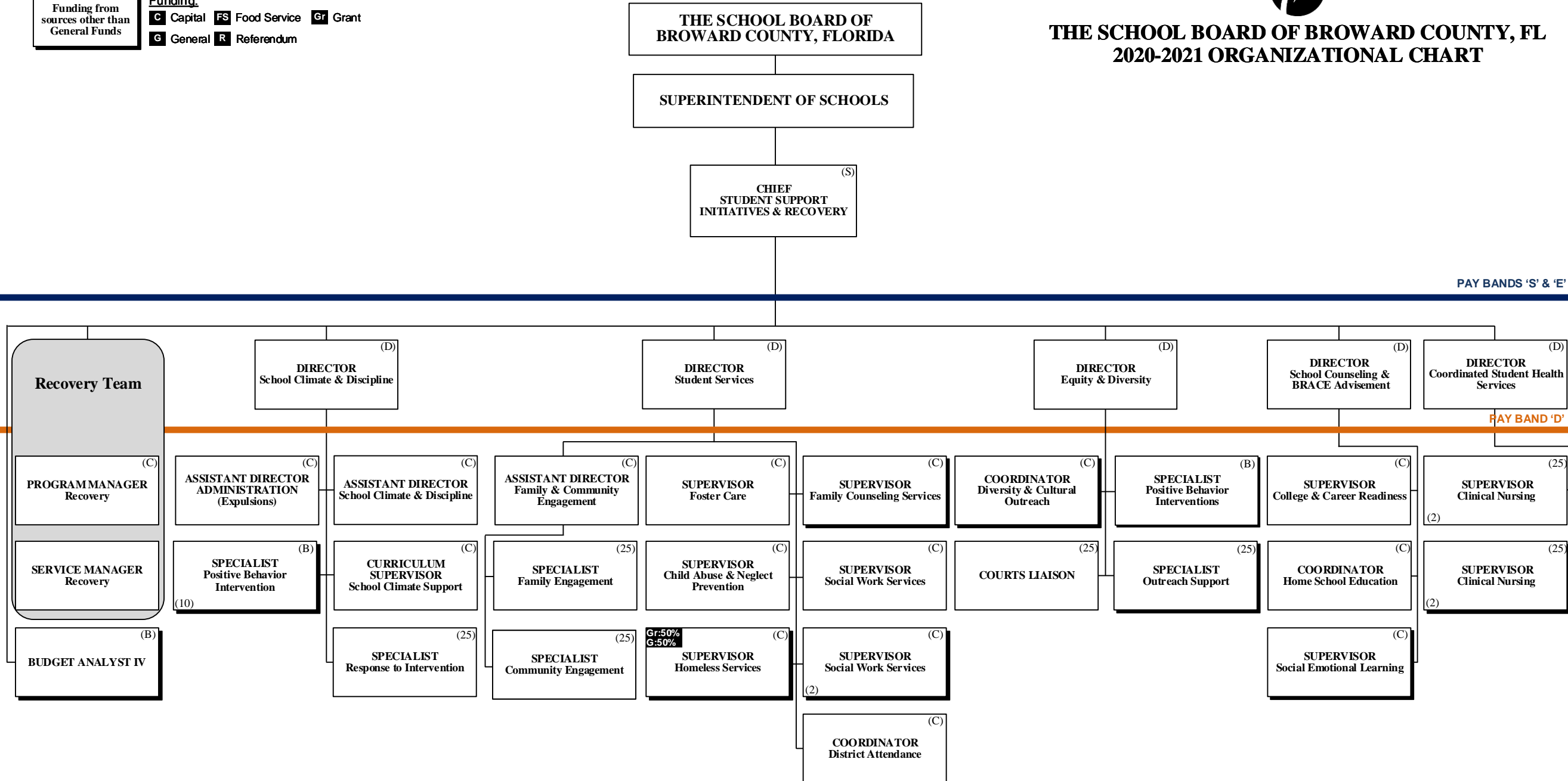
STUDENT SUPPORT INITIATIVES & RECOVERY



THE SCHOOL BOARD OF BROWARD COUNTY, FL 2020-2021 ORGANIZATIONAL CHART

Funding from sources other than General Funds

Funding:
C Capital **FS** Food Service **Gr** Grant
G General **R** Referendum



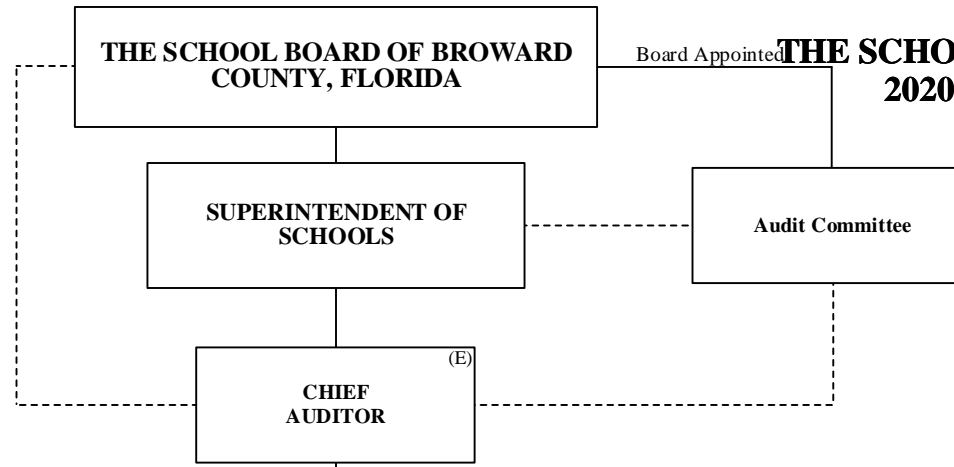


AUDITOR

Funding from sources other than General Funds

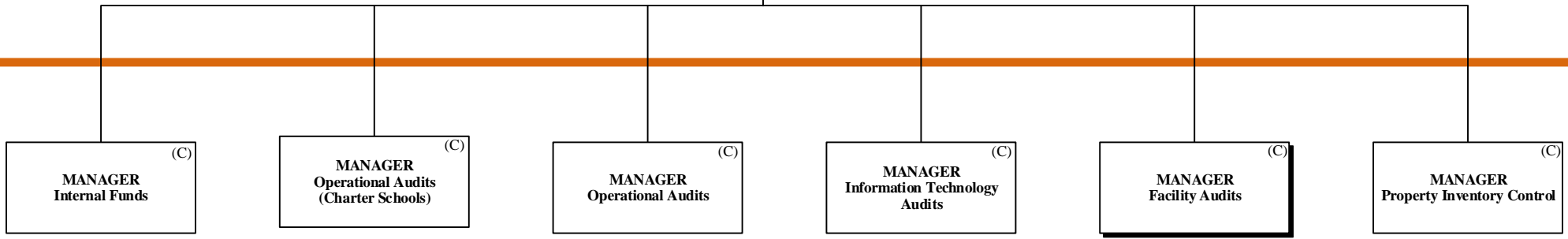
Funding:
C Capital **FS** Food Service **Gr** Grant
G General **R** Referendum

THE SCHOOL BOARD OF BROWARD COUNTY, FL 2020-2021 ORGANIZATIONAL CHART



PAY BANDS 'S' & 'E'

PAY BAND 'D'



PAY BANDS 'C' & 'B'

FACILITIES



THE SCHOOL BOARD OF BROWARD COUNTY, FL 2020-2021 ORGANIZATIONAL CHART

THE SCHOOL BOARD OF BROWARD
COUNTY, FLORIDA

SUPERINTENDENT OF
SCHOOLS

CHIEF FACILITIES
OFFICER

EXECUTIVE DIRECTOR
Capital Programs

DIRECTOR
Construction

DIRECTOR
Program Controls

DIRECTOR
Pre-Construction

MANAGER
Construction

MANAGER
Construction

MANAGER
Database Administration

MANAGER
Mechanical Engineering

MANAGER
ADA Accessibility

PROJECT
MANAGER III

(2)

(27)

(C)

(C)

MANAGER
Architectural Engineering

SPECIALIST
ADA Accessibility

MANAGER
Electrical Engineering

PROJECT
MANAGER III

(C)

(25)

(C)

(27)

Funding from
sources other than
General Funds

Funding:

C Capital **FS** Food Service **Gr** Grant
G General **R** Referendum

PAY BANDS 'S' & 'E'

PAY BAND 'D'

ESMAB PAY BANDS 'C' & 'B'
TSP PAY GRADES 25-28

FINANCIAL MANAGEMENT



THE SCHOOL BOARD OF BROWARD COUNTY, FL 2020-2021 ORGANIZATIONAL CHART

THE SCHOOL BOARD OF BROWARD COUNTY, FLORIDA

SUPERINTENDENT OF SCHOOLS

C-20%
G-80%
CHIEF FINANCIAL OFFICER (CFO) (S)

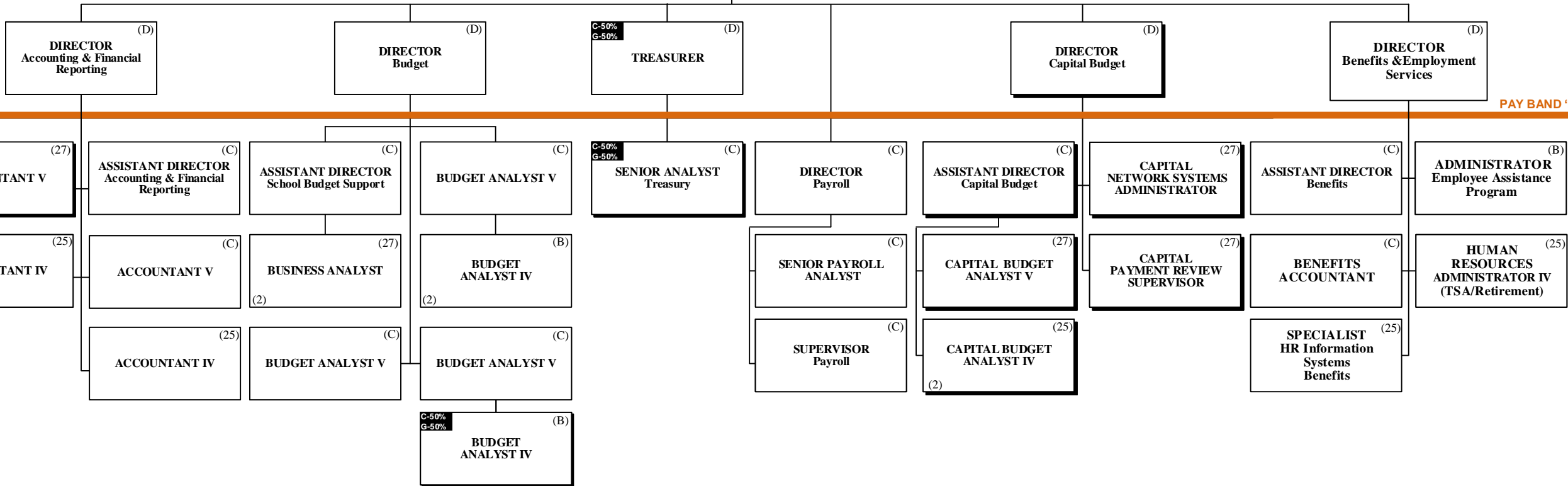
Funding from sources other than General Funds

Funding:
C Capital **FS** Food Service **Gr** Grant
G General **R** Referendum

PAY BANDS 'S' & 'E'

PAY BAND 'D'

ESMAB PAY BANDS 'C' & 'B'
TSP PAY GRADES 25-28



HUMAN RESOURCES & EQUITY

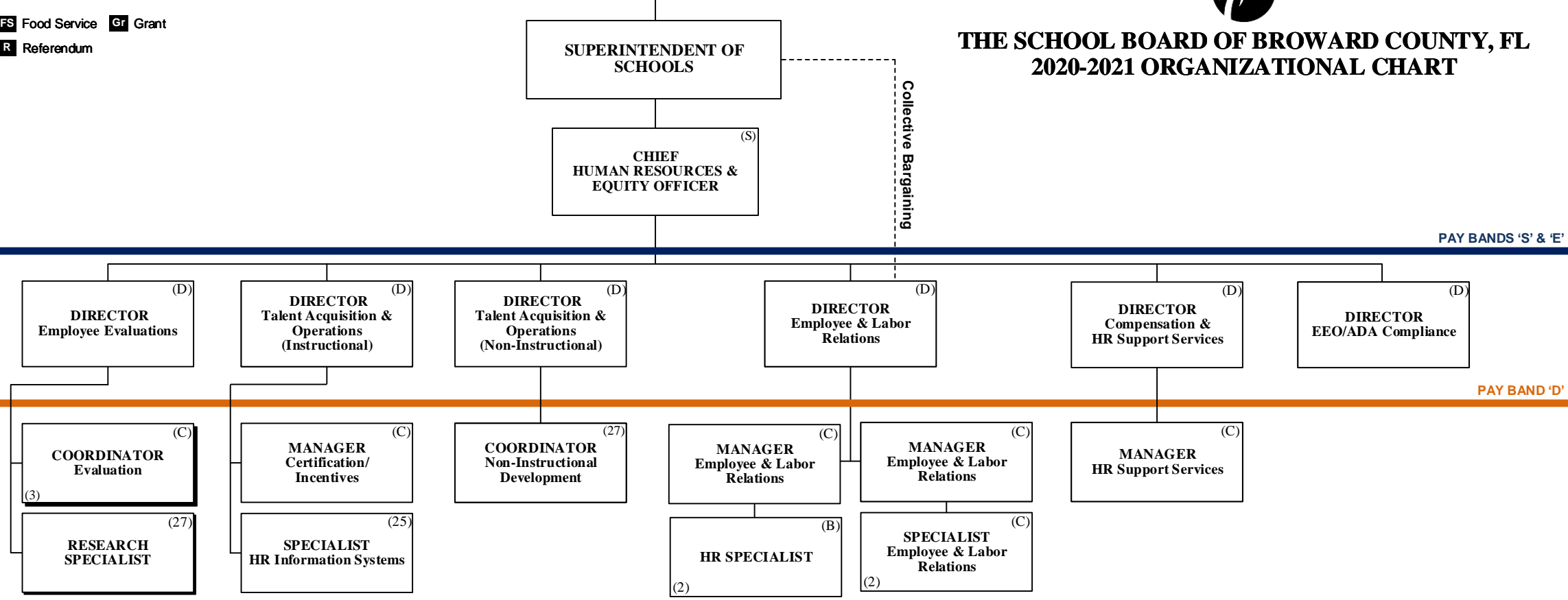
THE SCHOOL BOARD OF BROWARD COUNTY, FLORIDA



THE SCHOOL BOARD OF BROWARD COUNTY, FL 2020-2021 ORGANIZATIONAL CHART

Funding from sources other than General Funds

Funding:
C Capital **FS** Food Service **Gr** Grant
G General **R** Referendum



ESMAB PAY BANDS 'C' & 'B'
TSP/PBA PAY GRADES 25-28

INFORMATION & TECHNOLOGY



THE SCHOOL BOARD OF BROWARD COUNTY, FL 2020-2021 ORGANIZATIONAL CHART

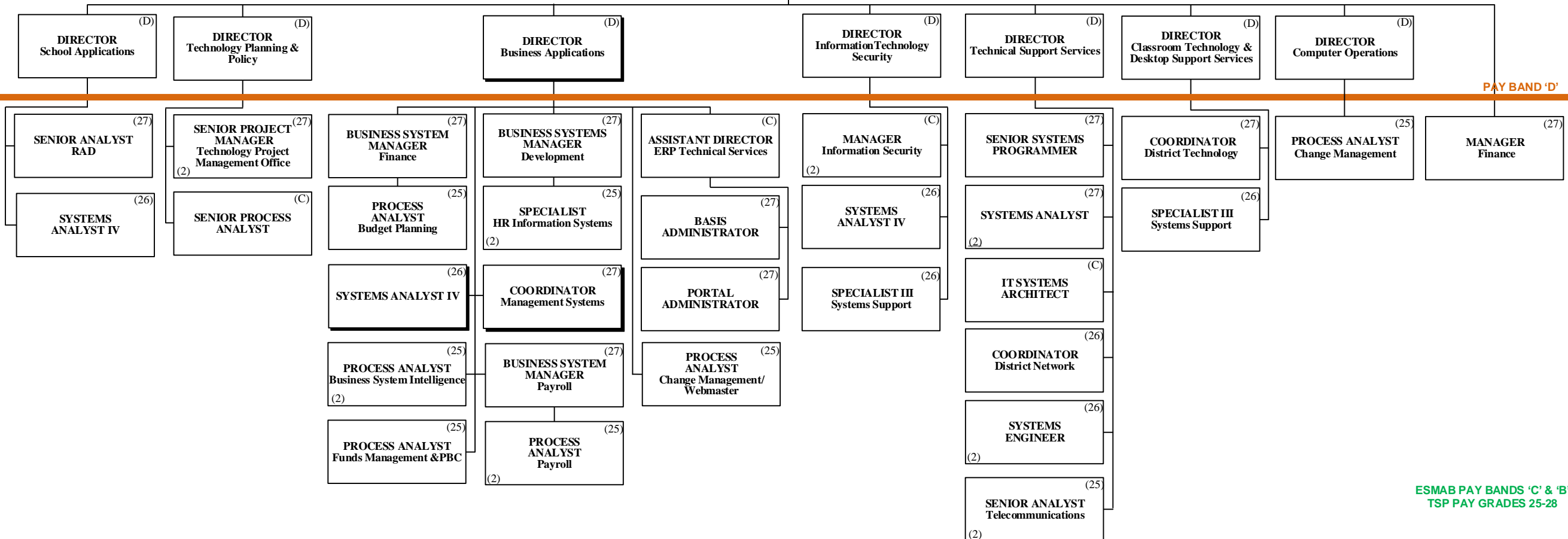
Funding:
 Funding from sources other than General Funds
C Capital **FS** Food Service **Gr** Grant
G General **R** Referendum

THE SCHOOL BOARD OF BROWARD COUNTY, FLORIDA

SUPERINTENDENT OF SCHOOLS

CHIEF INFORMATION OFFICER (S)

PAY BANDS 'S' & 'E'



PAY BAND 'D'

ESMAB PAY BANDS 'C' & 'B'
TSP PAY GRADES 25-28



**THE SCHOOL BOARD OF BROWARD COUNTY, FL
2020-2021 ORGANIZATIONAL CHART**

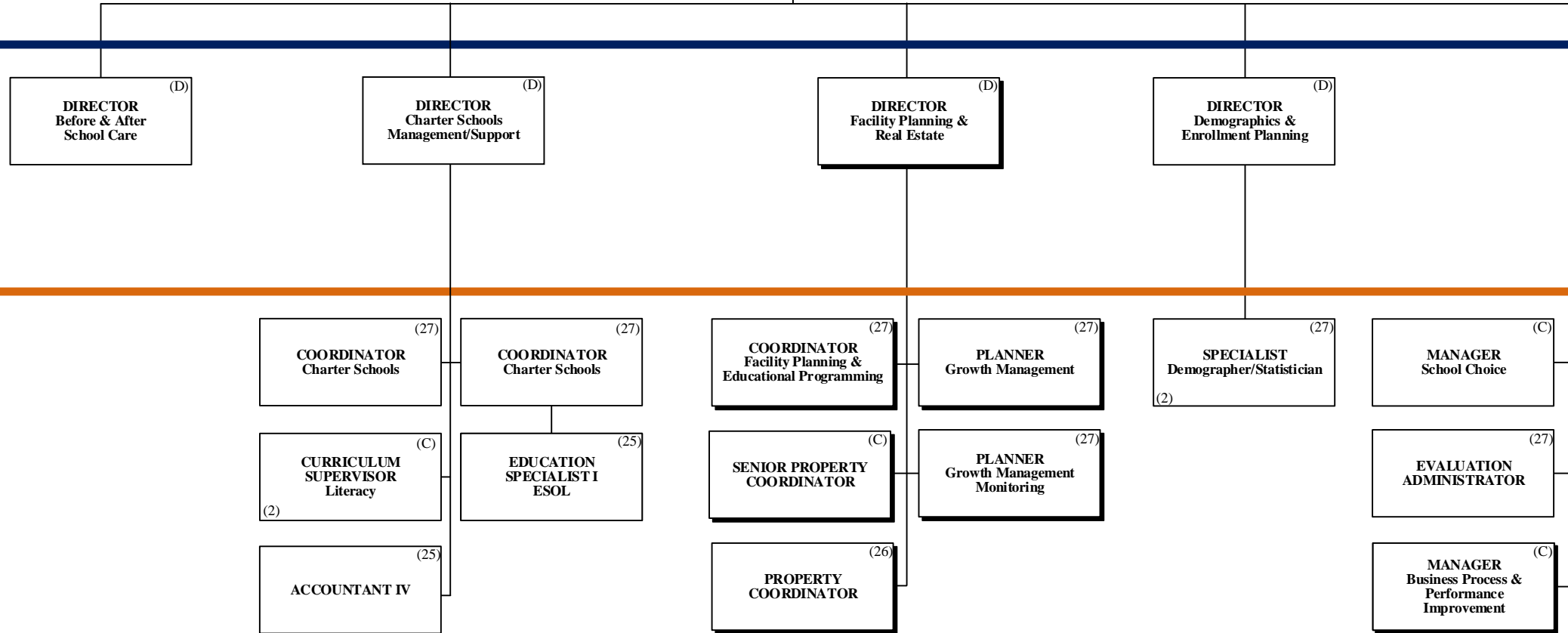
PORTFOLIO SERVICES

THE SCHOOL BOARD OF BROWARD COUNTY, FLORIDA

SUPERINTENDENT OF SCHOOLS

CHIEF PORTFOLIO SERVICES OFFICER (E)

Funding:
Funding from sources other than General Funds
C Capital **FS** Food Service **Gr** Grant
G General **R** Referendum



PAY BANDS 'S' & 'E'

PAY BAND 'D'

ESMAB PAY BANDS 'C' & 'B'
TSP PAY GRADES 25-28



**THE SCHOOL BOARD OF BROWARD COUNTY, FL
2020-2021 ORGANIZATIONAL CHART**

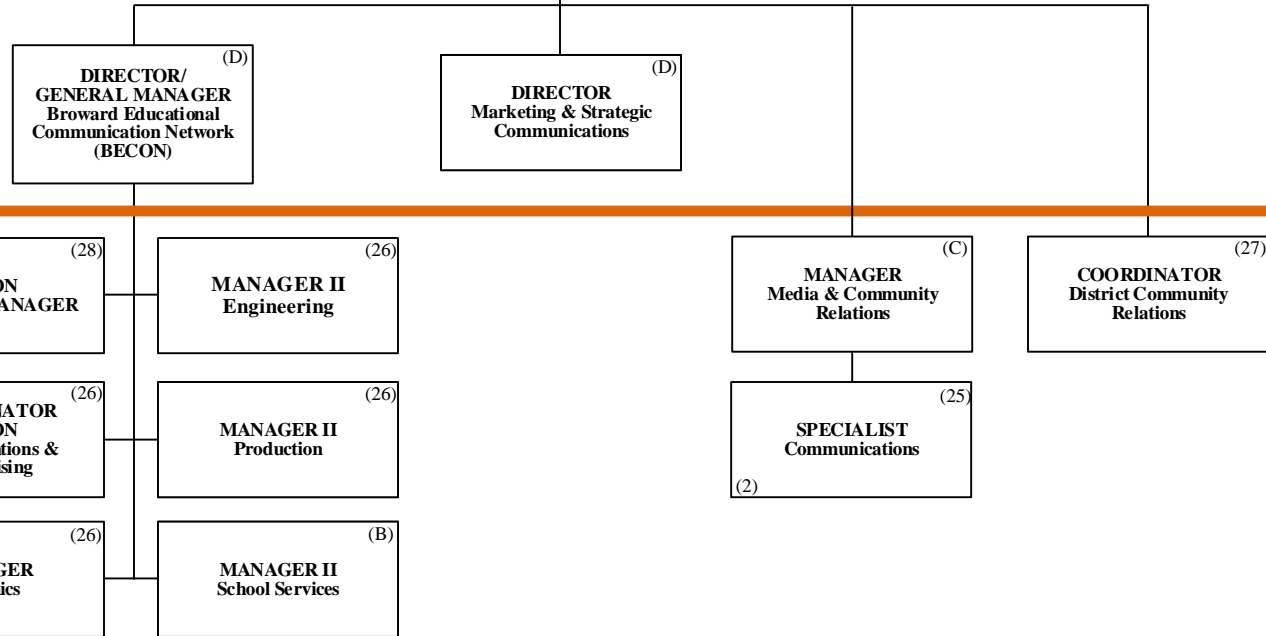
COMMUNICATIONS

THE SCHOOL BOARD OF BROWARD COUNTY, FLORIDA

SUPERINTENDENT OF SCHOOLS

CHIEF COMMUNICATIONS OFFICER (E)

PAY BANDS 'S' & 'E'



PAY BAND 'D'

Funding from sources other than General Funds

Funding:
C Capital **FS** Food Service **Gr** Grant
G General **R** Referendum

ESMAB PAY BANDS 'C' & 'B'
TSP PAY GRADES 25-28

CHIEF OF STAFF



THE SCHOOL BOARD OF BROWARD COUNTY, FL 2020-2021 ORGANIZATIONAL CHART

Funding from sources other than General Funds

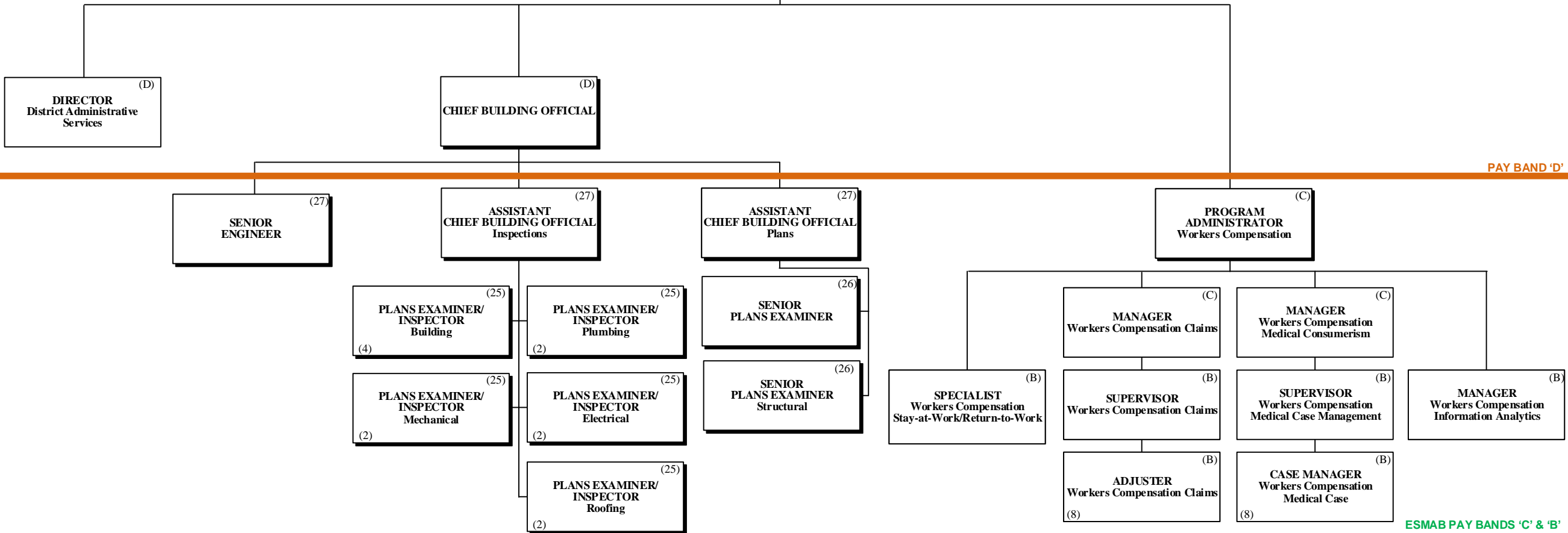
Funding:
C Capital **FS** Food Service **Gr** Grant
G General **R** Referendum

THE SCHOOL BOARD OF BROWARD COUNTY, FLORIDA

SUPERINTENDENT OF SCHOOLS

CHIEF OF STAFF (S)

PAY BANDS 'S' & 'E'



PAY BAND 'D'

ESMAB PAY BANDS 'C' & 'B'
TSP PAY GRADES 25-28

SAFETY, SECURITY & EMERGENCY PREPAREDNESS

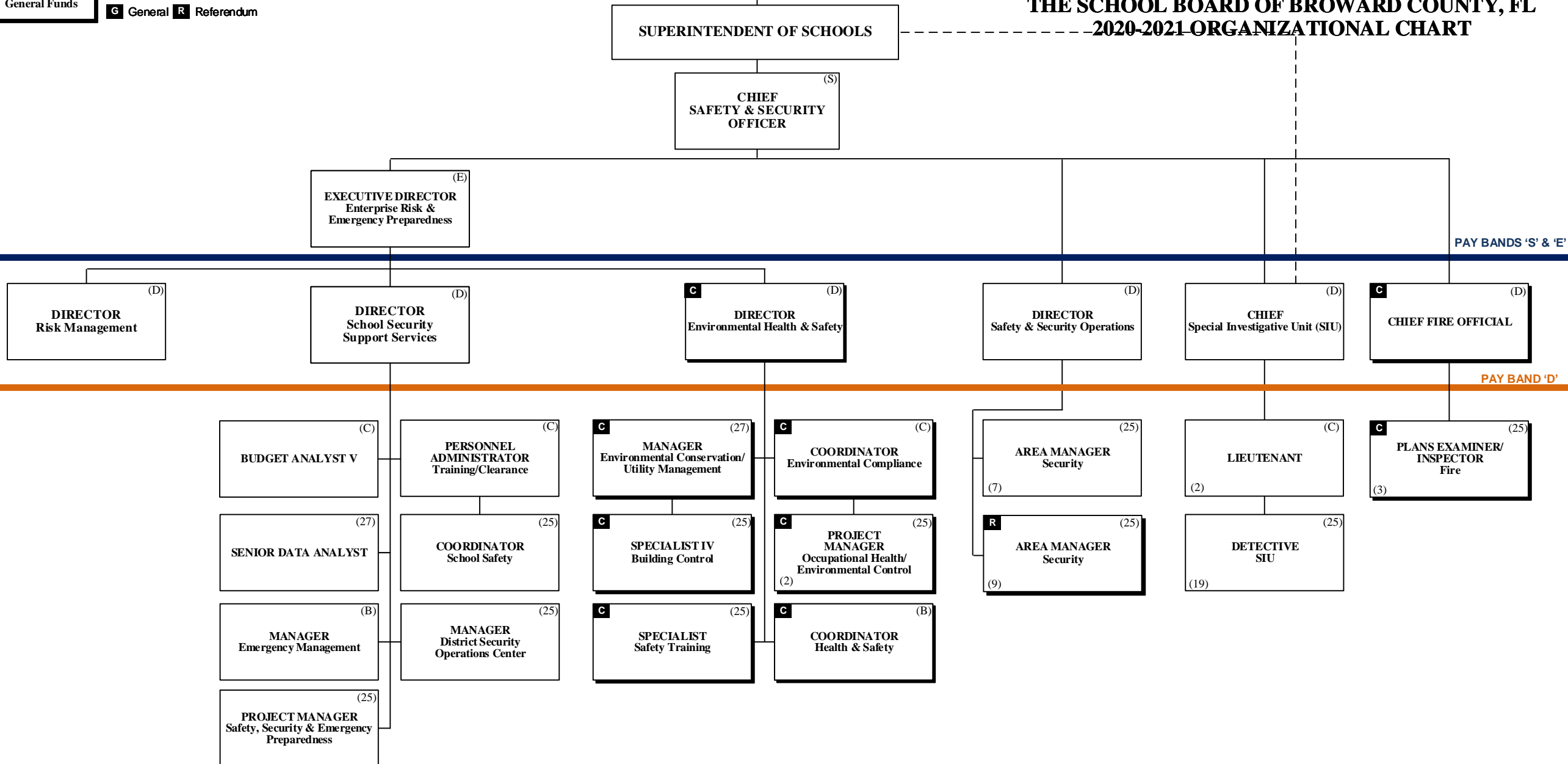


THE SCHOOL BOARD OF BROWARD
COUNTY, FLORIDA

THE SCHOOL BOARD OF BROWARD COUNTY, FL
2020-2021 ORGANIZATIONAL CHART

Funding from sources other than General Funds

Funding:
C Capital **FS** Food Service **Gr** Grant
G General **R** Referendum



PAY BANDS 'S' & 'E'

PAY BAND 'D'

ESMAB PAY BANDS 'C' & 'B'
TSP PAY GRADES 25-28

Funding from sources other than General Funds

Funding:

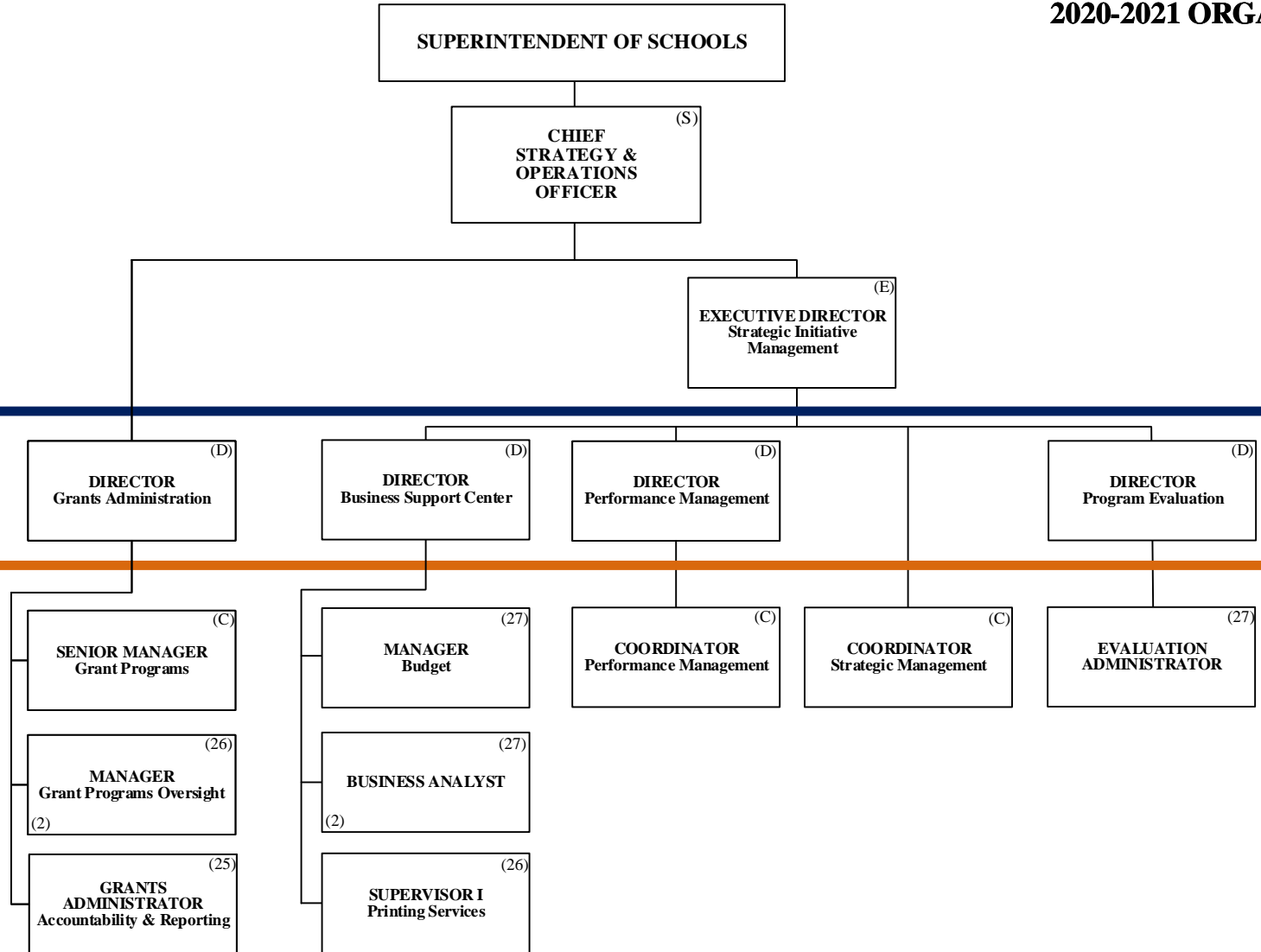
- C** Capital
- FS** Food Service
- Gr** Grant
- G** General
- R** Referendum

STRATEGY & OPERATIONS

THE SCHOOL BOARD OF BROWARD COUNTY, FLORIDA



THE SCHOOL BOARD OF BROWARD COUNTY, FL 2020-2021 ORGANIZATIONAL CHART



PAY BANDS 'S' & 'E'

PAY BAND 'D'

ESMAB PAY BANDS 'C' & 'B'
TSP PAY GRADES 25-28

STRATEGY & OPERATIONS

THE SCHOOL BOARD OF BROWARD COUNTY, FLORIDA



THE SCHOOL BOARD OF BROWARD COUNTY, FL 2020-2021 ORGANIZATIONAL CHART

Funding from sources other than General Funds

Funding:
C Capital **FS** Food Service **Gr** Grant
G General **R** Referendum

SUPERINTENDENT OF SCHOOLS

CHIEF STRATEGY & OPERATIONS OFFICER (S)

EXECUTIVE DIRECTOR Student Transportation & Fleet Services (E)

PAY BANDS 'S' & 'E'

DIRECTOR Food & Nutrition Services (D)

DIRECTOR Procurement & Warehousing Services (D)

OFFICER Economic Development & Diversity Compliance (D)
C-50%
G-50%

DIRECTOR Student Transportation & Fleet Services (D)

PAY BAND 'D'

ASSISTANT DIRECTOR Food & Nutrition Services (C)

COORDINATOR Food & Nutrition Services (C)
(2)

MANAGER Strategic Sourcing (C)

MANAGER Construction Sourcing (C)

ASSISTANT DIRECTOR Procurement Compliance (C)

MANAGER Supplier Diversity & Outreach Program (C)
C-50%
G-50%

ASSISTANT DIRECTOR Transportation Support Services (C)

MANAGER I Transportation Terminal (B)
(2)

MANAGER I Vehicle Maintenance (C)

MANAGER Centralized Routing (C)

AREA SUPERVISOR Food & Nutrition Services (B)
(11)

FINANCE MANAGER Food & Nutrition Services (C)

MANAGER Warehousing Services (B)

PURCHASING AGENT IV Construction (25)

SENIOR PROCESS ANALYST (C)

COORDINATOR Supplier Diversity & Outreach Program (26)

MANAGER II Transportation Terminal (C)
(2)

SUPERVISOR Special Needs Transportation (25)

SUPERVISOR Vehicle Maintenance (25)
(2)

DATA ANALYST Transportation (25)

AREA SUPERVISOR Special Programs Food & Nutrition Services (B)
(2)

PROGRAMMANAGER Nutrition, Education & Training (26)

MANAGER Procurement & Warehousing Services (25)
(2)

SENIOR PROCESS ANALYST (C)

COORDINATOR Supplier Diversity & Outreach Program (Compliance) (26)
C-50%
G-50%

ACCOUNTANT V (27)

SUPERVISOR Food & Nutrition Services Information Systems (B)

SUPERVISOR Food & Nutrition Services Equipment & Supplies (25)

PURCHASING AGENT IV (25)

STRATEGY & OPERATIONS



**THE SCHOOL BOARD OF BROWARD COUNTY, FL
2020-2021 ORGANIZATIONAL CHART**

Funding from sources other than General Funds

Funding:
C Capital **FS** Food Service **Gr** Grant
G General **R** Referendum

THE SCHOOL BOARD OF BROWARD COUNTY, FLORIDA

SUPERINTENDENT OF SCHOOLS

CHIEF STRATEGY & OPERATIONS OFFICER (S)

EXECUTIVE DIRECTOR Physical Plant Operations (E)

PAY BANDS 'S' & 'E'

DIRECTOR Physical Plant Operations (D)
 C-70%
 G-30%

PAY BAND 'D'

MANAGER Custodial/Grounds (C)
 C-55%
 G-45%

AREA MANAGER Trades Zone 1 (C)
 C-70%
 G-30%

AREA MANAGER Trades Zone 3 (C)
 C-70%
 G-30%

MANAGER Facilities Support Services (C)

MANAGER PPO Finance (C)

SENIOR PROCESS ANALYST (C)
 C

MANAGER Grounds (26)
 C-55%
 G-45%

AREA MANAGER Trades Zone 2 (C)
 C-70%
 G-30%

AREA MANAGER Trades District (C)
 C-70%
 G-30%

SUPERVISOR Work Flow/Labor Utilization (25)
 C-55%
 G-45%

SUPERVISOR Planning & Scheduling (25)
 C-55%
 G-45%

TRADE SUPERVISOR (25)
 (9)